

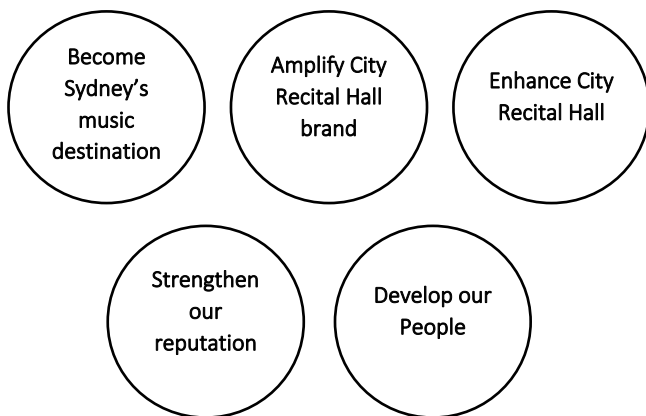
OUR PURPOSE

To make City Recital Hall a performing arts centre renowned for its inclusive contemporary and classical music programming, elevated audience experience, and world-class acoustics.

Our Values

- **Connection** – Live music connects people
- **Imagination** – Creativity produces better performances
- **Excellence** – Reputation is built through excellence
- **Sustainability** is the key to lasting impact

OUR STRATEGIC FOCUS AREAS



KEY RELATIONSHIPS



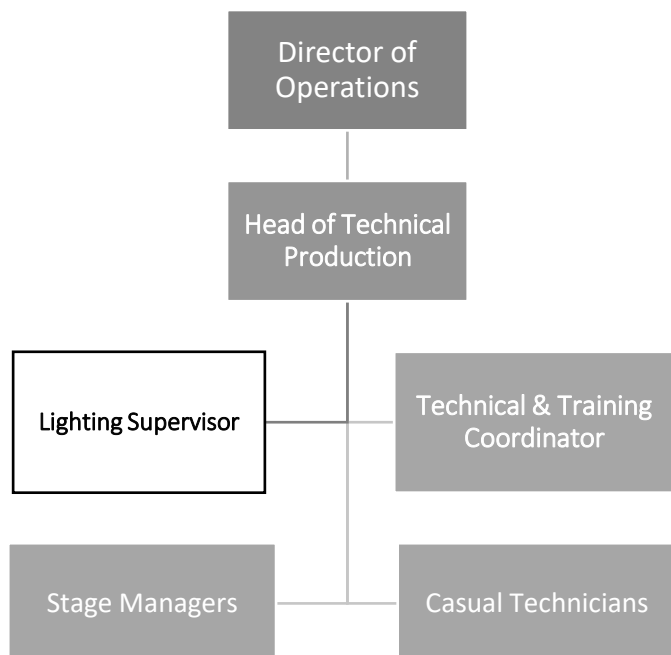
MY PURPOSE

The Lighting Supervisor is a creative and technical role, delivering stage lighting and effects for classical and contemporary music concerts and other events staged in the hall. The role has the scope to create lighting designs where required and will also work closely with external lighting designers touring shows into the venue.

Reporting to the Head of Technical Production, the Lighting Supervisor is responsible for providing technical expertise to deliver safe, efficient and creative lighting operations, and assisting with equipment maintenance programs.

The role involves working to a flexible roster driven by performance schedules and requires regular evening and weekend work.

REPORTING LINE



MY RESPONSIBILITIES**Responsibilities****Duties**

- **Technical:** provide technical expertise to event planning and delivery; install, rig, and operate lighting equipment; create and deliver a lighting equipment maintenance program managing lighting stock and consumable stock; assist visiting technical crews; proactively problem-solve with a range of clients and staff, within available resources.
- **Creative:** collaborate and communicate effectively with hirers, artists, lighting designers and crew to ensure the artistic vision is delivered to the stage.
- **Work Health & Safety:** Ensure clean and hazard-free workspaces; assist in testing and tagging of electrical equipment; report incidents, hazards and near misses; participate in emergency training; adhere to relevant WHS regulations and operate equipment according to safety guidelines.

Performance Indicators

- Consistently high client satisfaction, technical proficiency and execution of hirers' creative vision
- Maintain excellent professional attitude, collaboration, personal grooming, punctuality and reliability

MY ATTRIBUTES, SKILLSET AND BEHAVIOUR**Criteria****Essential**

- Broad, up-to-date knowledge of stage lighting equipment and techniques
- Creativity, with the ability to design and produce a variety of simple lighting effects for the stage
- Proven aptitude for quick thinking, resourcefulness and problem solving technical and creative issues
- Ability to collaborate in a creative team working towards a single artistic vision
- Knowledge of Work Health Safety principles
- Current NSW Working with Children Check clearance for paid employment

Desirable

- Test and tag certification; and/or Rigger's Ticket
- First Aid certification

Experience

- Minimum five years' professional experience as a stage lighting technician in high profile environments
- Basic lighting design and CAD skills

Attributes and Behaviours**Connection**

- Production excellence supports the artist's connection to their audience

Imagination

- Discover new ways to maximise the potential of our rig

Excellence

- Elevate our lighting to enhance the artistic vision and audience experience

Sustainability

- Care for our equipment ensures lasting technical capacity

ACKNOWLEDGEMENT

I accept the position description as stated above and that the position description may need amending and updating periodically due to changes in responsibilities and organisational requirements. Changes to the position description will be consistent with the purpose for which the position was established.

Print Name: _____

Signature: _____ Date: _____